

Starship – 2000ton Type-TI Frontier Transport

General Information

Using a 2000-ton, TL15 hull, the Type-TI_v0-5 Class Transport mounts jump drive-V, maneuver drive-V, and power plant-V, giving a performance of jump-2 and 2G acceleration. Fuel tankage supports a 2 parsec jump, at 200t per parsec, and 2 months of operations. Attached to the bridge are two Computer Model/5 std. There are 12 staterooms and 5 low berths. Installed weaponry include 3 T3 Missiles, 3 T3 Fusion Guns, and 4 T3 Sandcasters. The ship does not have cargo space. The ship has a streamlined hull, with scoops and intakes for frontier refueling.

Carried craft include 1 Cargo Shuttle, 1 Air/Raft Enclosed, and 1 Grapple Set Triple. The ship has 20 crew (3 bridge crew, 2 engineers, 12 gunners, 2 auxiliary flight crew, and 1 medic) but can be technically operated by 6 crew, and can carry 5 low passengers.

Notes

This craft is an adaption for the TI that I think is feasible IMTU, given the fact tha this is a company owned transport. The original ship had 12 Staterooms with double occupancy for all but command crew and a total crew of 20 (1 Bridge, 2 Engineer, 10 Gunnery, 2 Flight, 2 Troops, 2 Command, 1 Medic). It aso featured a nuclear damper and EM hardening. I will likely put some more work into the craft.

The MT version had triple Model/9 computers which woud add about MCr 250 to the standard design. Way too much. I believe I can live with two Model/5 bis computers but it wouldn't be the same design. The MT Type-TI in TRaveller 5 would cost

nearly as much as the Type-TJ.

Short info on the Traveller Wiki: [Type-TI](#) | [Type-TJ](#)

Deckplans found on the Inter-web

Vol;Name;TL;Free;Gs;J;PP;Fuel;Duration;Mcr;Computer;Crew;Psgr.;LB;Notes
2000;Frontier Transport;15;860;2;2;2;440;one Month;588,3;Model/5 bis;20;0;5;sl,fs,s95,a/r

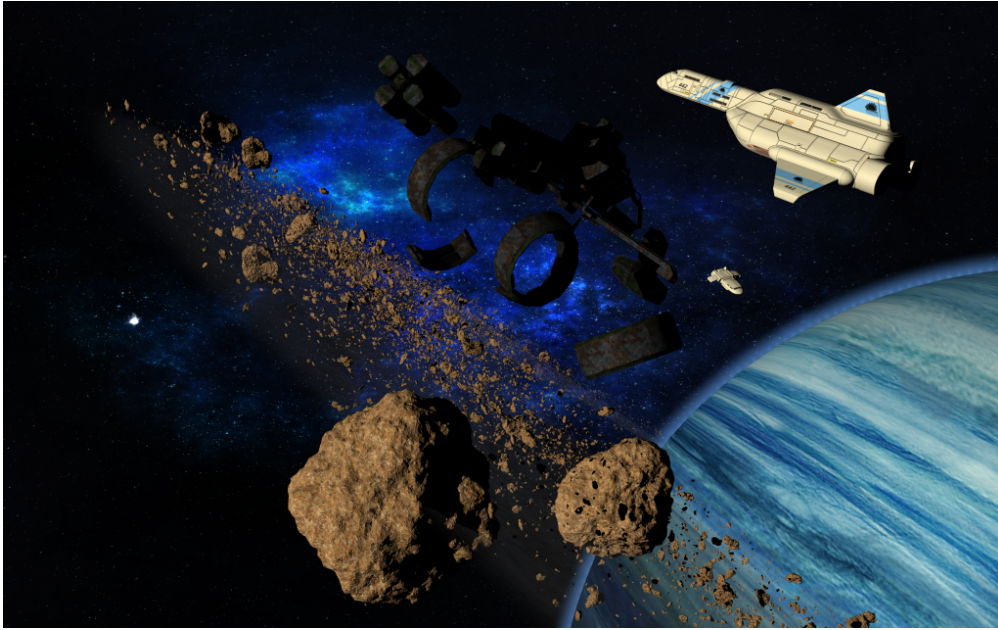


Frontier Transport



The ship is sort of finished by now and has been featured in

the official 2013 Traveller Calendar.



Transport T-VS22 Type-TI_v0-5 MCr588.9

Builder: Bilstein Yards

Disposition: In Service

Frontier Transport (Cost OTU: MCr587.9)

Frontier Transport serve mainly Class-C starport near the fringe of the Imperium. They do not normally carry passengers and are known for their relatively cramped crew living quarters, but out on the frontier crews cannot select from an abundance of ships, so that is an accepted fact.

Crew comfort: +2

Passenger demand: -5

[code]

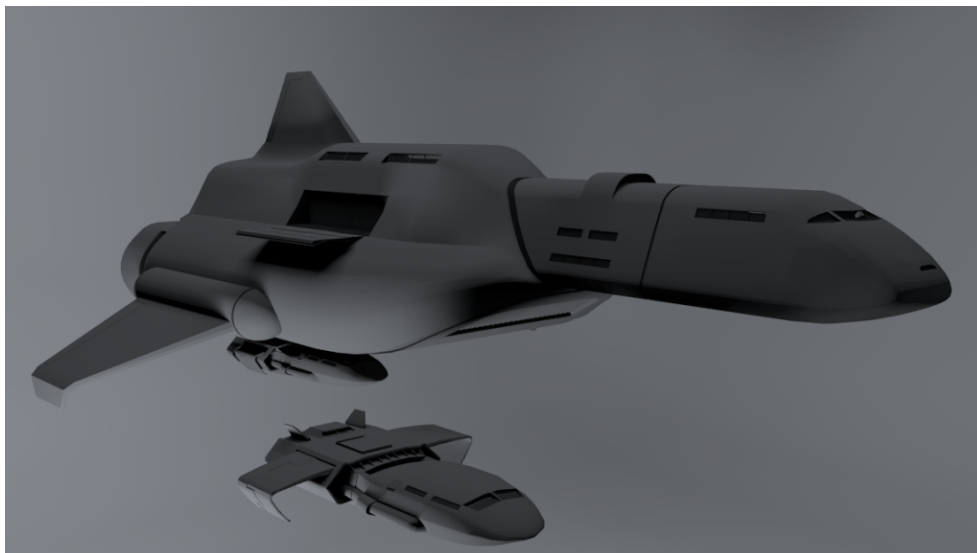
Tons	Component	MCr
Notes		
-----	-----	-----

2000	Streamlined Hull, lifters	142	S,
lifters			
20	Landing legs with pads	20	
20	Flotation hull	20	
10	Fins	5	
0	AV=15. 1 Blast Plate	0	
80	Plant Fuel (2 months)	0	2
months			
400	Jump Fuel (2 parsecs)	0	2
parsec jump, at 200t per parsec			
105	Jump Drive-2 (V)	105	J
2			
39	Maneuver Drive-2 (V)	78	2
G			
61	PowerPlant-2 (V)	61	P
2			
40	40x Fuel Purifiers		4
#40			
4	4x Fuel Scoops	0.4	#4
4	4x Fuel Intakes	0.4	#4
2	2x Fuel Transfer Pumps	0.2	#2
0	LR Surf EMS	2.5	
0	AR Surf CommPlus	1.5	
0	AR Surf HoloVisor	1.5	
0	AR Surf Radar	1.5	
0	LR Surf Communicator	2.5	
0	LR Surf Scanner	2.5	
0	Vd Surf Deep Radar	0.6	
0	2x DS Surf EMS	7	#2
0	2x D Surf Densitometer	0.6	#2
6	3x LR T3 Missile	9.6	#3
9	3x Fo T3 Fusion Gun	19.5	#3
4	4x Vd T3 Sandcaster	4.4	#4
3	B Nuclear Damper	2	
5	5x Emergency Low Berth	2.5	#5
10 individuals			
2	Clinic	1	
2	Life Support Long Term	2	40
person-months			
10	2x Computer Model/5 std	54	#2
75	Standard Bridge		5

10cc 20op 20ws				
2	2x Crew Common Fresher		2	#2
10 crew				
4	Office			0
inc. 50 Kg safe				
6	Owner Suite		0.4	
fresher + safe				
36	12x Crew Stateroom		1.2	
#12 1 crew				
55	11x Crew Lounge			0
#11				
2.5	5x Low Berth		0.5	#5
1 passenger				
2.5	5x Air Lock		0.5	#5
770	14x Cargo Hold Basic			0
#14				
90	Cargo Hold Basic		0	
22	11x Cargo Lock			0
#11				
95	Cargo Shuttle		22	
4	Air/Raft Enclosed		0.1	
6	Grapple Set Triple		6	up
to 105t				
4	Vehicle Lock		0	

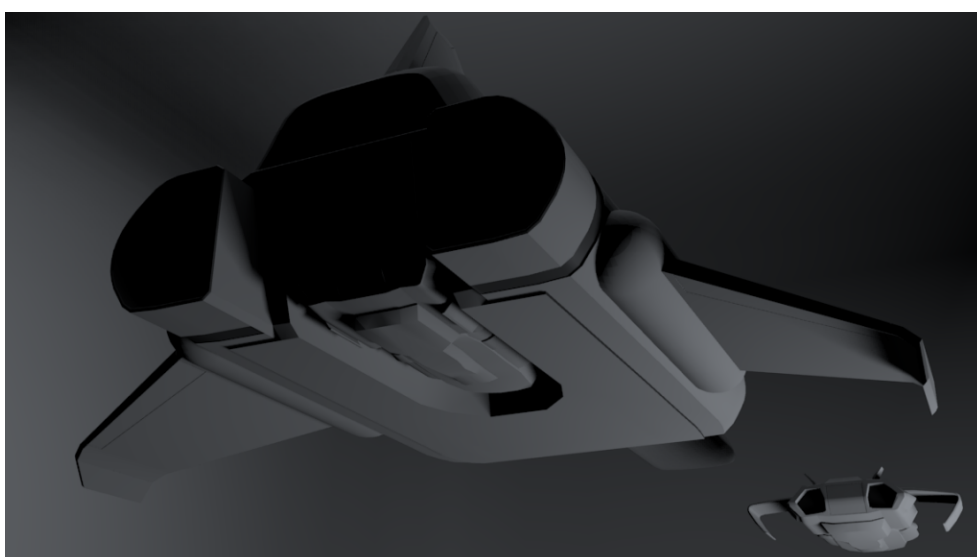
Design source files: ACS-T-VS22-Type-TI_v0-5

The sub craft beneath its cradle...



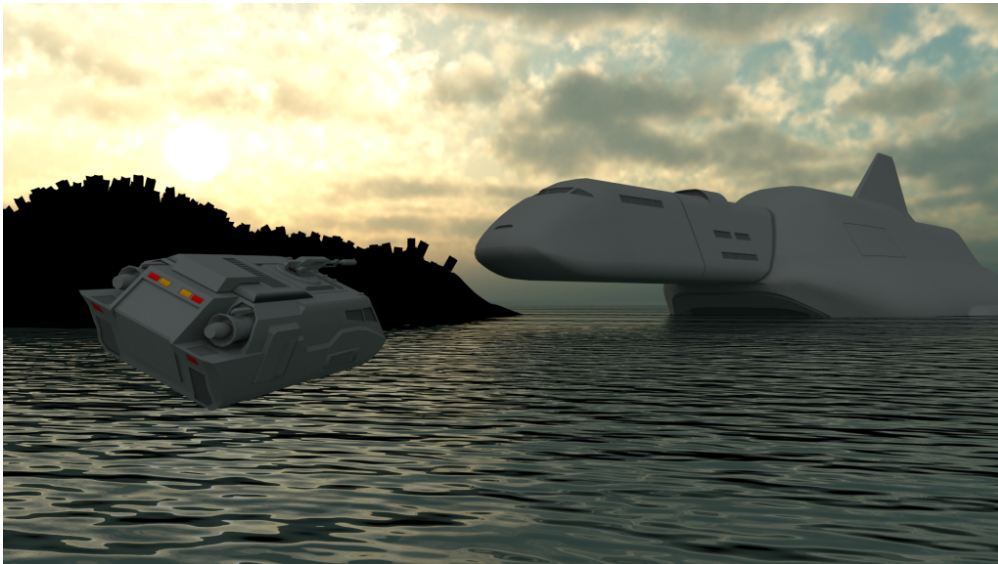
Frontier Transport WIP 01

And a view from below...



Frontier Transport WIP 02

Homages to original Traveller Art



Notes:

A 2000-ton Streamlined hull
 It is equipped with the Dalon 2 Grid T2 jump drive,
 the Banshee Gravitics T2.4 maneuver drive,
 and the Zhunatsu 2949.hT2 power plant,
 and is capable of Jump-2 and 2G acceleration.

STATISTICS

Table showing tail numbers and construction information for the Type TI class. Information correct as of 001-1120.

First Tail ID Flight	Building Current Shipyard Status	Keel Laid Down
TI-13042 95-1093	Delvani In Service	242-1090
TI-13047 205-1093	Delvani In Service	71-1091
TI-13070 165-1094	AHG, AG In Service	174-1091
TI-13080 200-1093	Yard 11 No. 1 In Service	324-1091

TI-13090	Yard 16 No. 1	275-1091
68-1094	In Service	
TI-13107	Zagado	141-1092
184-1093	In Service	
TI-13111	General Shipyards	336-1092
217-1093	Destroyed	
TI-13122	Tukera	118-1093
265-1096	Lost 1102	
TI-13127	Delvani	268-1093
114-1095	In Service	
TI-13136	Arshani, Etran	304-1093
134-1097	In Service	
TI-13154	Vlandian No. 2	65-1094
134-1097	Scrapped	
TI-13170	Yard 16 No. 3	143-1094
24-1095	Lost 1099	
TI-13183	Yard 16 No. 4	35-1095
80-1098	Destroyed	
TI-13192	Yard 22 No. 1	114-1095
75-1098	Destroyed	
TI-13201	Delvani	119-1095
120-1096	Missing	
TI-13207	Highlans	189-1095
161-1097	In Service	
TI-13213	Ling Standard	282-1095
112-1099	In Service	
TI-13220	Arshani, Etran	313-1095
188-1096	In Service	
TI-13245	Zagado	359-1095
265-1097	In Service	
TI-13250	Clan Severn	17-1096
138-1097	In Service	
TI-13256	Yard 22 No. 1	127-1096
292-1099	In Service	
TI-13258	Clan Severn	291-1096
7-1100	Lost 1105	
TI-13263	Vlandian No. 2	213-1097
238-1098	Lost 1102	
TI-13280	Arshani, Etran	347-1097
75-1101	In Service	
TI-13312	Delvani	62-1098

52-1100	Scrapped	
TI-13320	Yard 16 No. 3	213-1098
43-1102	Captured	
TI-13326	Gashidda No. 3	290-1098
340-1100	In Service	
TI-13337	Mars	309-1098
317-1100	On Order	
TI-13345	Ling Standard	269-1098
342-1099	In Service	
TI-13350	Yard 16 No. 4	334-1098
271-1101	In Service	
TI-13354	Vlandian No. 2	320-1098
171-1099	On Order	
TI-13372	Yard 16 No. 4	89-1099
306-1100	In Service	
TI-13381	Gashidda No. 3	252-1099
26-1101	Scrapped	
TI-13400	Vlandian No. 2	297-1099
49-1103	Building	
TI-13404	Zagado	30-1100
336-1100	In Service	
TI-13424	Mars	155-1100
126-1101	Fitting Out	
TI-13433	Clan Severn	248-1100
291-1101	In Service	
TI-13452	Vlandian No. 2	77-1101
193-1103	In Service	
TI-13461	Bilstein Yards	279-1101
184-1102	In Service	
TI-13472	General Shipyards	17-1102
287-1102	Lost 1107	
TI-13485	Delvani	204-1102
278-1104	Scrapped	
TI-13494	Sabaald	349-1102
200-1103	Scrapped	
TI-13507	Yard 16 No. 2	117-1103
119-1105	Fitting Out	
TI-13510	Yard 16 No. 1	167-1103
188-1106	In Service	
TI-13522	Tukera	254-1103
178-1105	In Service	

TI-13535	AHG, AG	202-1103
323-1104	In Service	
TI-13542	Vlandian No. 2	187-1103
183-1105	In Service	
TI-13546	Zagado	304-1103
133-1106	In Service	
TI-13565	Highlans	150-1104
68-1106	Scrapped	
TI-13570	Yard 22 No. 1	100-1104
65-1105	In Service	
TI-13584	General Shipyards	162-1104
331-1105	In Service	
TI-13604	Yard 16 No. 4	144-1104
152-1106	In Service	
TI-13627	Yard 17	73-1104
332-1105	Missing	
TI-13636	Vlandian No. 1	181-1104
219-1106	Scrapped	
TI-13651	Vlandian No. 1	215-1104
146-1107	Lost 1110	
TI-13657	Clan Severn	251-1104
14-1107	Building	
TI-13663	Yard 11 No. 2	300-1104
351-1107	On Order	
TI-13698	Commonal	169-1105
64-1108	In Service	
TI-13722	Piorabanti	221-1105
152-1108	Scrapped	
TI-13728	Tukera	284-1105
141-1106	Lost 1115	
TI-13747	Yard 17	125-1106
150-1107	Lost 1113	
TI-13758	Gashidda No. 2	300-1106
16-1110	Lost 1116	
TI-13772	Gashidda No. 3	92-1107
149-1110	Lost 1117	
TI-13773	Gashidda No. 2	188-1107
179-1110	In Service	
TI-13784	Arshani, Etran	269-1107
324-1108	Fitting Out	
TI-13797	Arshani, Etran	80-1108

364-1110	Building	
TI-13801	Delvani	232-1108
337-1111	Building	
TI-13820	Commonal	298-1108
306-1110	Fitting Out	
TI-13829	Mars	3-1109
329-1111	In Service	
TI-13831	Gashidda No. 2	73-1109
219-1111	In Service	
TI-13834	Clan Severn	8-1109
87-1110	In Service	
TI-13840	Piorabanti	173-1109
74-1112	Lost 1119	
TI-13853	Yard 16 No. 1	281-1109
288-1110	Scrapped	
TI-13856	Clan Severn	94-1110
252-1112	In Service	
TI-13867	AHG, AG	317-1110
337-1112	Scrapped	
TI-13878	Yard 16 No. 4	163-1111
231-1113	In Service	
TI-13892	AHG, AG	33-1112
148-1113	In Service	
TI-13914	AHG, AG	82-1112
217-1115	Scrapped	
TI-13925	Ling Standard	122-1112
179-1115	On Order	
TI-13935	Delvani	332-1112
359-1115	Scrapped	
TI-13942	Gashidda No. 3	155-1113
266-1116	In Service	
TI-13963	Delvani	361-1113
242-1114	In Service	
TI-13972	Clan Severn	335-1113
241-1115	In Service	
TI-13976	Yard 16 No. 1	322-1113
181-1116	In Service	
TI-13982	Yard 16 No. 2	236-1114
274-1116	Lost 1125	
TI-13999	Yard 22 No. 1	40-1115
258-1117	Fitting Out	

TI-14001	Vlandian No. 1	312-1114
175-1115	Captured	
TI-14011	AHG, AG	95-1115
26-1118	Building	
TI-14016	Yard 16 No. 4	123-1115
208-1116	In Service	
TI-14029	Yard 22 No. 1	285-1115
168-1118	In Service	
TI-14042	Zagado	313-1115
141-1117	In Service	
TI-14065	Delvani	11-1116
265-1118	In Service	
TI-14072	Yard 22 No. 1	319-1115
207-1117	On Order	
TI-14091	AHG, AG	330-1115
194-1117	Building	
TI-14097	Yard 16 No. 2	300-1115
225-1118	On Order	
TI-14098	Bilstein Yards	80-1116
27-1117	In Service	
TI-14116	Vlandian No. 1	85-1116
176-1117	In Service	
TI-14124	Gashidda No. 1	90-1116
255-1119	Fitting Out	
TI-14145	Piorabanti	340-1116
139-1119	On Order	
TI-14157	Yard 17	176-1117
274-1119	In Service	