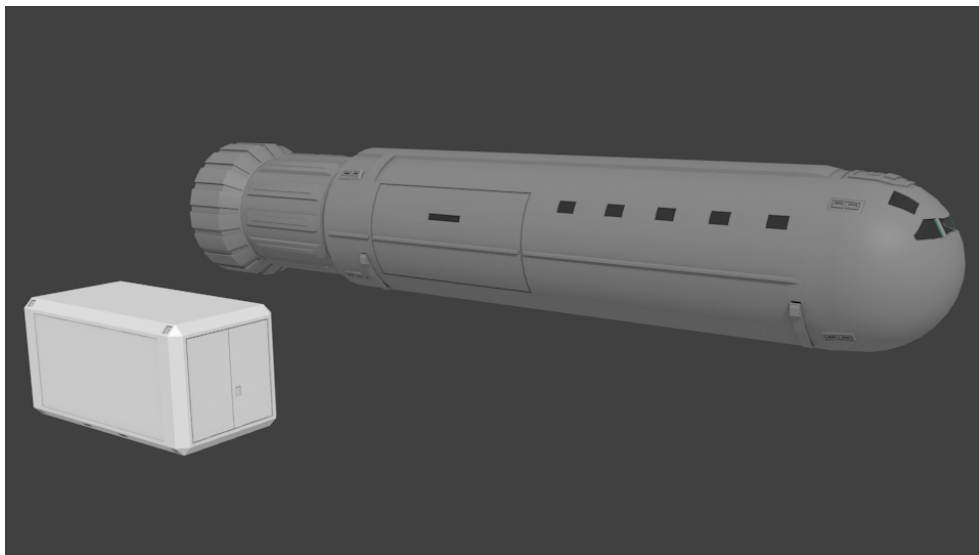


# Small Craft – 30ton Ship's Boat

After I made a modular Cutter about two years ago, I planned to do all the standard Small Craft. I sort of relaunched that project recently. This is the current State of the Ship's Boat.

Vol	Name	TL	Free	Gs	Fuel	Duration	MCr	Computer	Notes
30	<a href="#">Ship's Boat</a>	13+	16	6	2t	4 weeks	14.8	Model/1bis	

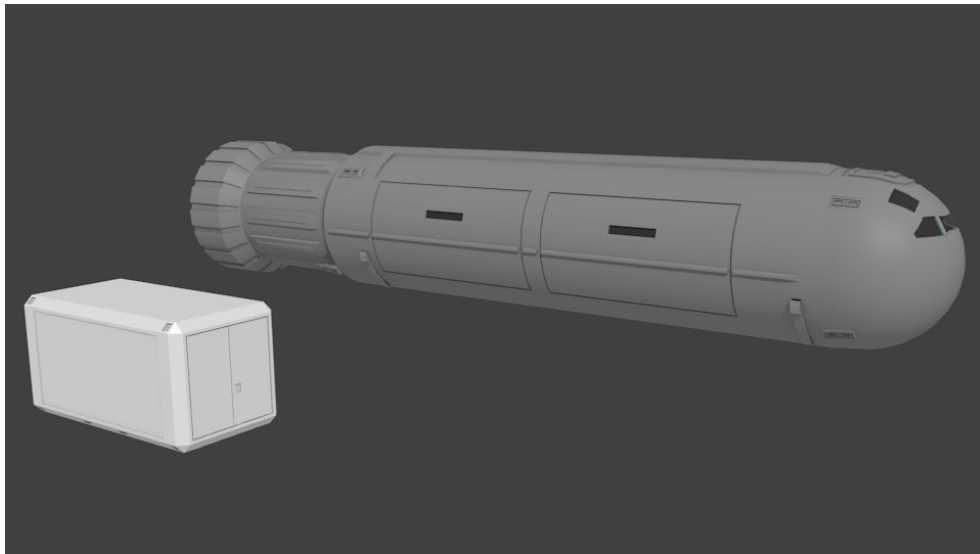


30ton Ship's Boat Combi Configuration

I think I will need the finished boat for the [600ton Subsidized Liner](#), that's also on my workbench atm. But both vessels are far from complete.

The [30ton Ship's Boat](#) and [20ton Launch](#) share the same diameter hull and front section. As visible at the cockpit window configuration these craft have three windows out front. The [50ton Modular Cutter](#) and the [40ton Research Pinnacle](#) however share a 6m diameter hull and the same front section to. These

cockpits have four windows out front.



30ton Ships Boat Double Cargo Gate Configuration

The image below shows two updated models above the Slow Boat.

