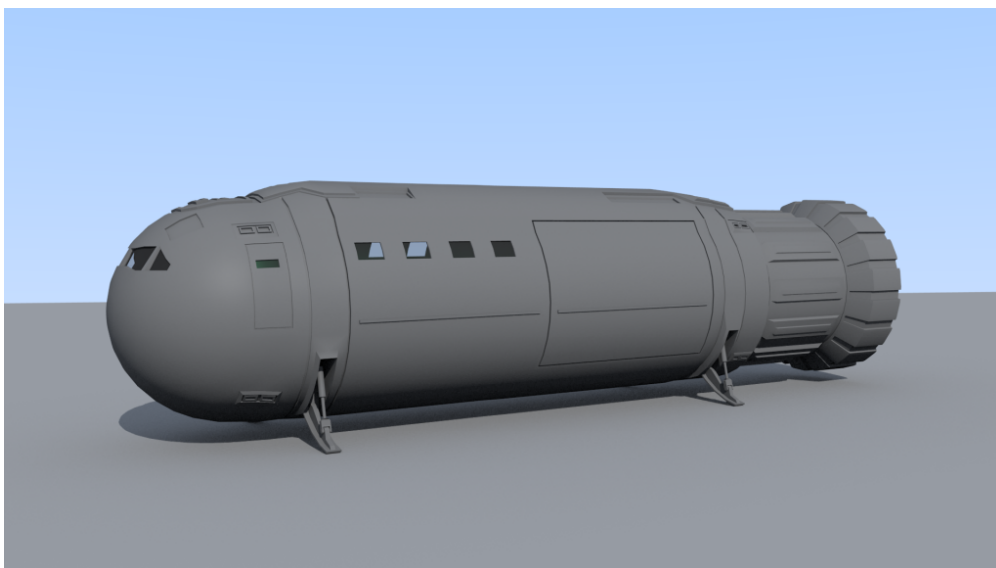
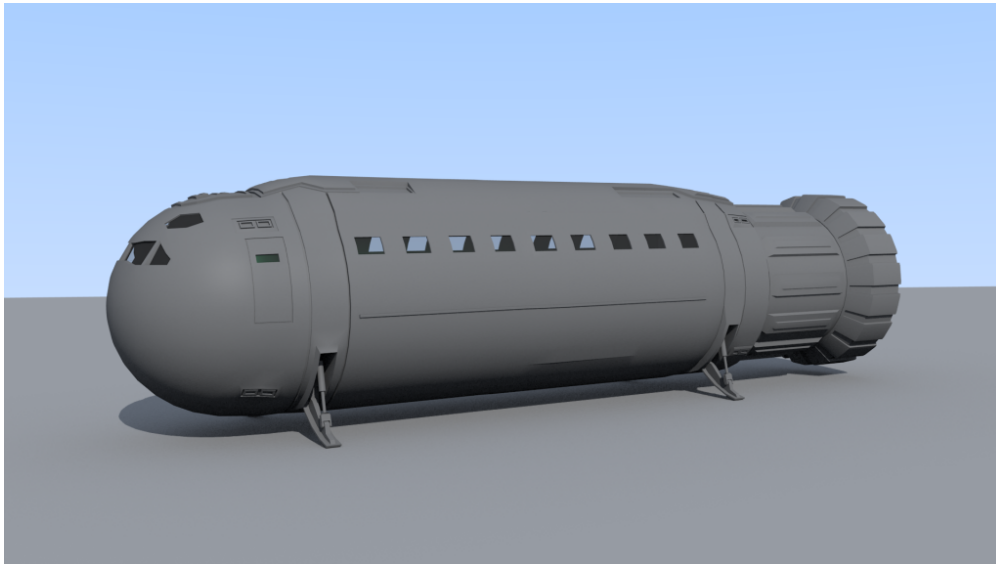


# 40ton Research Pinnacle revisited...

Vol;Name;TL;Free;Gs;Fuel;Duration;Mcr;Computer;Notes
40 ;Pinnacle ;12+ ;24 ;5 ;2t;4 weeks ;19.4 ;Model/2 ;L2

Tiny update on that craft. I already had the combi-variant with a cargo compartment behind the passenger compartment. But I figured a passenger only „shuttle“ variant and a pure cargo variant would be nice too. So here are all three.





The 30ton Ship's Boat and 20ton Launch share the same diameter hull and front section. As visible at the cockpit window configuration these craft have three windows out front. The 50ton Modular Cutter and the 40ton Research Pinnacle however share a 6m diameter hull and the same front section to. These cockpits have four windows out front.