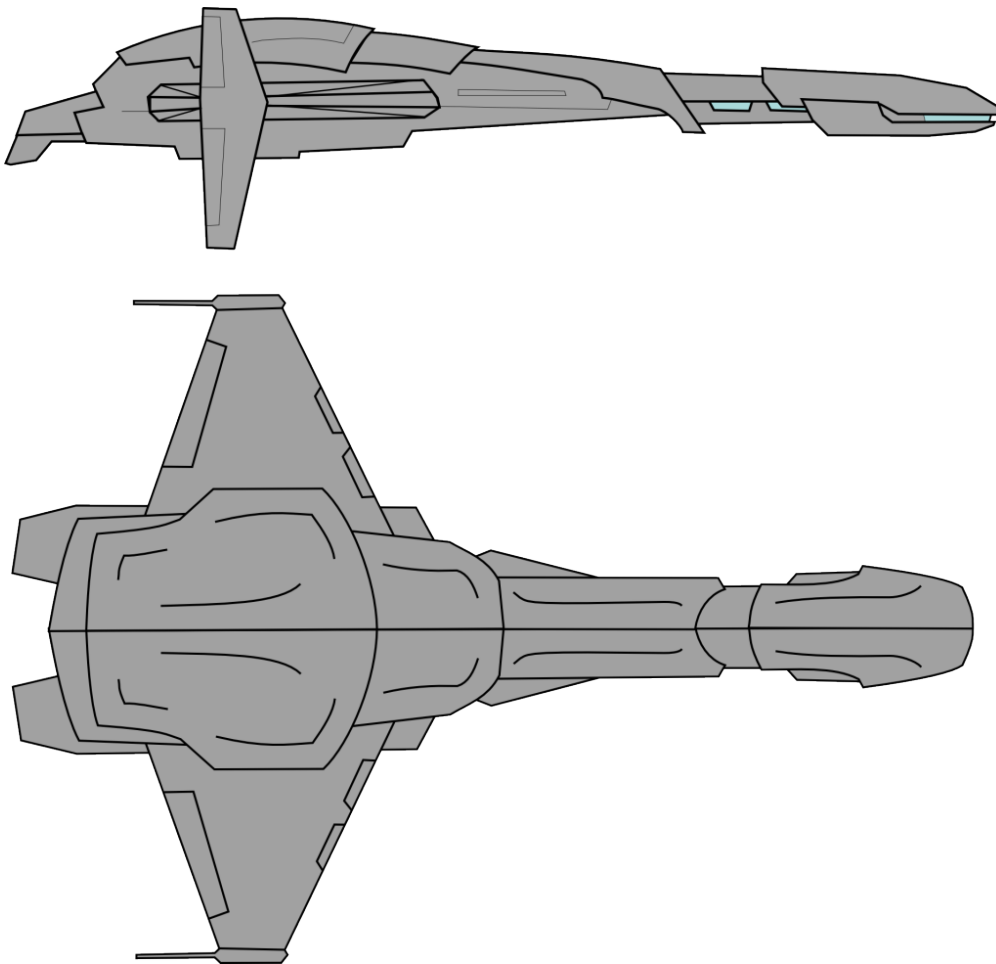


# Starships – Type CM (Mercenary Cruiser) – HS33 Yamal

My attempt to convert a RiftRoamers RPG (RR) original starship to Traveller. The craft was downsized as ships in RR tend to be larger in general. The appropriate size would have been 1200 tons in RR. However that would have been just another Kinunir which was not my intention.



The ship is designed following Traveller5 rules by using the Traveller5 ACS Shipyard (an online ship-design software for T5 by Robert Eaglestone)

Mercenary Cruiser  
CM-HS33 Yamal

MCr353.9

[General Shipyards]

Owner: Rhaan Industries

Disposition: In Service

The 800 ton Streamlined Yamal Class Merc Cruiser is a variant of the Broadsword built as an alternative to the Broadsword Merc Cruiser. It's outer appearance loosely copies the lines of patrol corvette, while being larger of course.

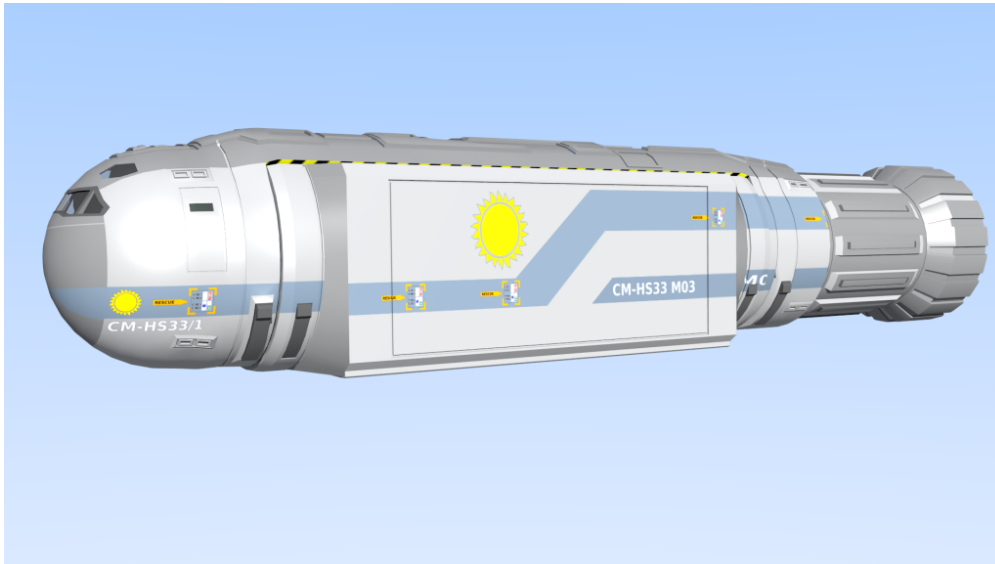
Design requirements: 1 Modular Cutter (in an external cradle mount accessible through the cargo bay), 2 additional Cutter modules (in an external cradle mount accessible through the cargo bay), 2 20dt Gigs (in an external cradle mount accessible by special connection tubes), 2 Grav carriers (Lopec or Resolve carried aboard cutter modules, these craft show as overtonnage in the design).



Blocking out the major features in Blender

The design now features Maneuver 3, Jump 3, 3 Month of Powerplant operation and offers 95 tons of cargo space in addition to all the vehicles.

The Image below show the vessels's Cutter and one of the three special Container Modules.



Click on the link below to continue with the stats and later with the deck plans too.

Rescued article from old website. Unfortunately the second page is currently not available. It will return though.

~~Continue reading "Starships — Type CM (Mercenary Cruiser) — HS33 Yamal"~~

Comments (0)

Starships – Type CM (Mercenary Cruiser) – HS33 Yamal

Category: 3D-Model, IMTU, Mercenary Cruiser, Starship, Traveller, WIP – admin @ 16:00

Jun

18 2013