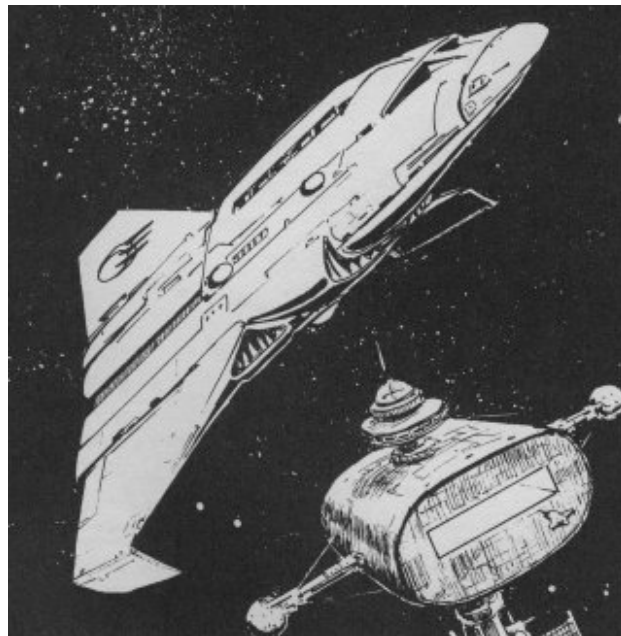


# Starship – 1000ton Tukera Long Liner

## 1000t Tukera Long Liner

Using a 1000-ton streamlined hull, the Tukera Long Liner is a main-route passenger transport serving much of the Imperium. It mounts a jump drive V, maneuver drive E, and power plant V to supply power for one month of continuous operation, giving performance of Jump-4 and 1G acceleration. Fuel tankage supports a month of operations and one jump-4. On the bridge is a Model/4 computer. There are 50 staterooms and 5 emergency low berths. The ship has five hardpoints. Only one triple turret is usually installed; it carries a heterogeneous mix of one beam laser, one missile rack, and one sandcaster. The ship carries one vehicle: a 20-ton launch, grappled to the hull. Cargo capacity for the long-liner is 130 tons.



Scan from The Traveller Adventure, (c) FFE

The Long Liner requires a crew of 13: captain/pilot,

astrogator, 6 engineers, medic, 3 stewards, and gunner. The pilot or astrogator operates the launch. The ship can carry up to 36 passengers.

Vol	Name	TL	Free	Gs	J	PP	Fuel	Duration	MCr	Computer	Crew	Psgr.	LB	Notes
1000	<a href="#">Tukera RT Long Liner</a>	15	130	1	4	4	404	one Month	254.3	Model/4	std	13;36;14	s20, U, +33	

[Deckplan found on the Inter-webs](#)

[Image found on the Inter-webs](#)

[Design specs by Robert Eaglestone](#)