

Traveller Illustrated [dot] com



Simba Safari

When I started this website in 2009, the primary goal of the site was to visualize Traveller starships in a more contemporary way, much like some skillful CG artists succeeded to do in recent years. Well modeling in the third dimension has become a hobby for me and I do have more things in mind than just starships. Let's see where the road will lead me.

Please head to the Blog for the News and the most Current Post.

To bookmark Traveller Illustrated you may also use
<http://travellerillustrated.com>

To check out starships or space craft just open the Starship List or Small Craft List (the ships are linked from there) or the Work In Progress Vehicle List. Alternatively just head for the Gallery to view more than 75 textured starship renderings and more than 60 untextured starship renderings.

For Traveller related CG Rob Caswell, Tom Peters, the late Bryan Gibson, the late Andrew Boulton, Jesse de Graff, Ted

Lindsey, Wayne Peters and Ian Steed– among a few others – are a major source of inspiration for me.

A more recent image I made for the Traveller Calender 2014 wich never came to be, but the image is now featured in the current Traveller Calendar 2015.



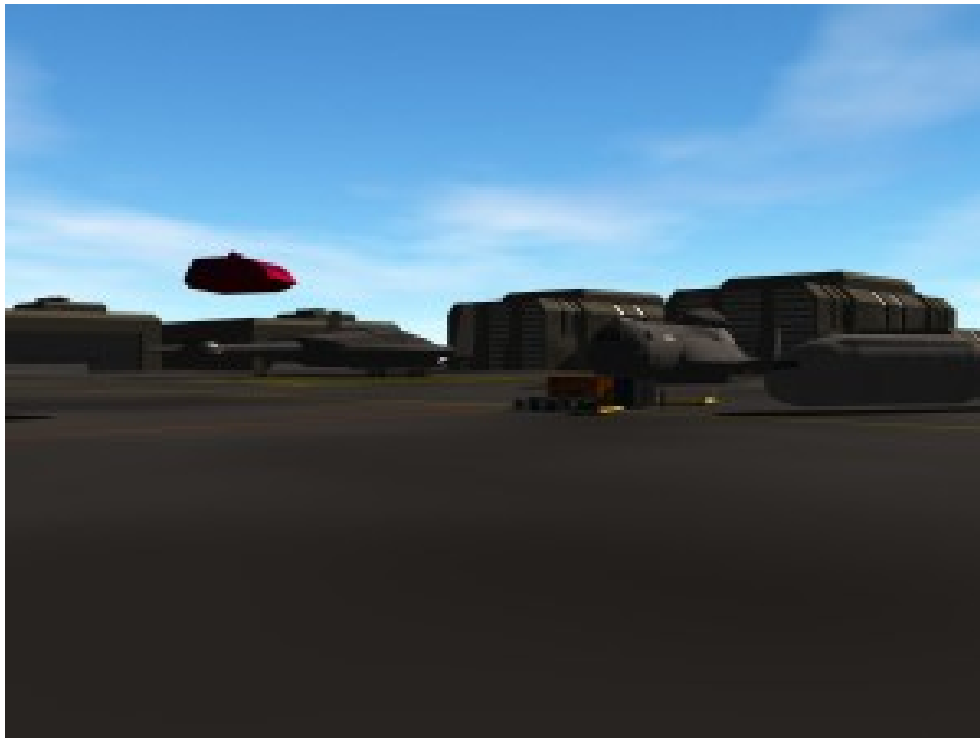
Meet the Lone Lady

Traveller 5 Wall of Heroes (3rd Panel, 3rd Column, 21st Entry)

The site developed really well but in 2013 I relaunched and sort of managed to get rid of the database of older articles. So until I can recover the 2009 to 2012 articles, the archive reaches back to the date of the relaunch.

By the way the main reason for doing a Traveller Web site at that time in 2009 was due to the fact that I had rediscovered three old 3D models of Traveller ships I made about five or six years earlier.

All three are shown in the following rendering done in Cinema 4D CE+



Class C Starport

A Type-T Patrol Cruiser (*Lurushaar Kilaalum*), a Type-R Subsidized Merchant or Fat Trader and a 50 dton Modular Cutter. The Grav-Carrier is somewhat inspired by a Sword Worlds *Gram* Grav APC mixed with a flavour of a *Kariku* Grav Carrier, but matches none closely. Oh, and there are two Grav Floaters in the picture.

Let's see if I can do something visually more promising out of that scene...

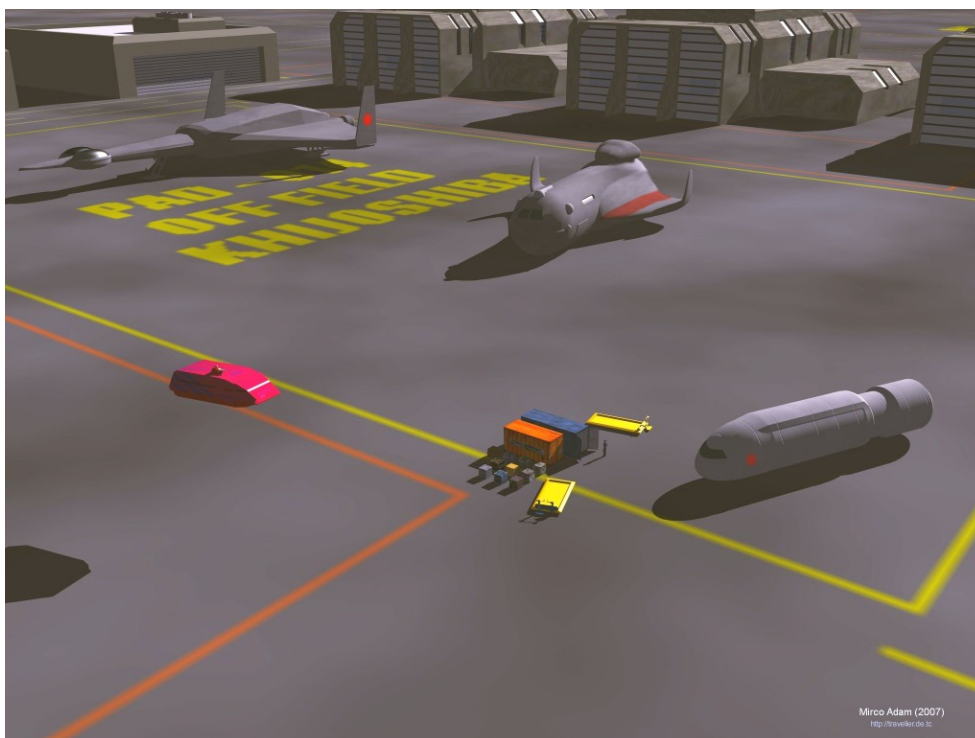
The next steps will be to soup up the available models so they actually match some of the drawings in various Traveller books I own. I might provide the old – inaccurate – models for download later, so anyone with a decent 3D software can render her or his own Traveller space scenes.

I will use Blender for future modelling and rendering (*hint*). But you will also see various images rendered with Cinema 4D CE+ or other Applications.

My first project will be the Type-T Patrol Cruiser as it seems to be neglected by current artists and the model already looks

close. I will devote a page of resource info for each model if applicable. Of course to induce some sanity into the design, my version will feature folding lower fins ☐

So just to gain a better point of view – and more light – here is another shot of the same scene from a different camera angle:



Busy Class C Starport

So, welcome aboard! Stay tuned and prepare for dimming the lights.

The new mission of this site is to recreate a bunch of ships, craft and vehicles from OTU Classic Traveller and MegaTraveller with an evolution of design applied to these. This could be a facelift only or a complete redesign to make the vehicle or ship fit to the descriptions published in CT or MT material. Each model is to be easily recognised by Traveller players.

In regard to this new mission the following render shows a remake with more current assets:



Busy Industrial Shuttle Port

So, welcome aboard! Stay tuned and prepare for dimming the lights.

mirrc

IMTU tc+ tm+ tn+ tg ru- ge+ 3i c+ jt au+ pi+ he+

OTU 42% au+ br- cpu- fs- ge+ j- ti+ tv+ uwp+

Tarlon Rhaan 0201 C88885A-9 S hi as+ va- so- zh vi+ da 723

The Traveller game in all forms is owned by Far Future Enterprises. Copyright 1977 – 2022 Far Future Enterprises.