

# Starship – 600ton Subsidized Liner

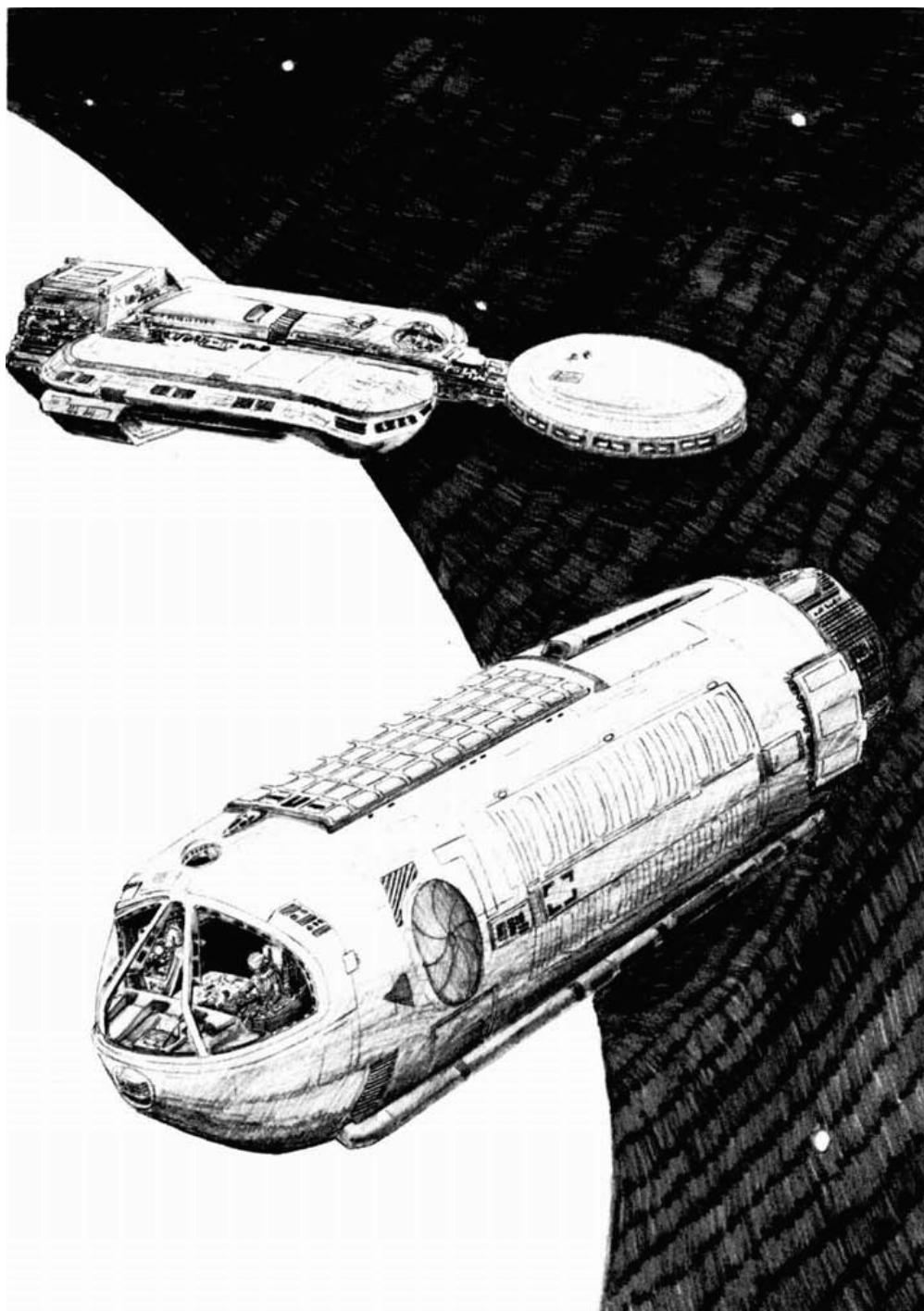
The Subsidized Liner comes in several variants. The most common being the standard Stellar-Class and the slightly modified Bastien-Class Liners. There is a supplement by Loren Wiseman on RPGNow detailing the ship in four variants, including Deckplans and Adventure Seeds.

600	Subsidized Liner	12	2	1	3	3	199	one month	134.50	Model/2bis std	5	21	20	s10(s20)
-----	------------------	----	---	---	---	---	-----	-----------	--------	----------------	---	----	----	----------

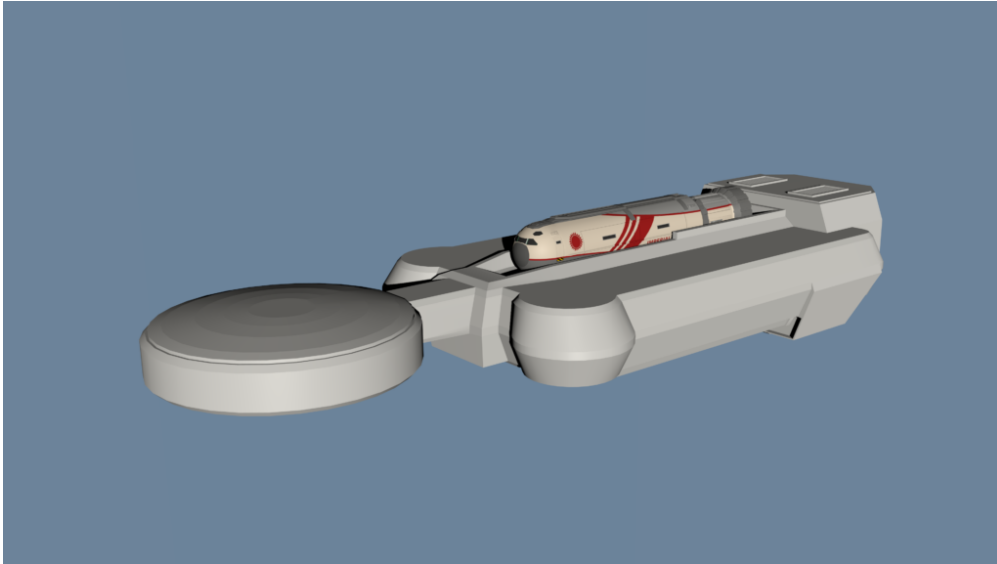
I have a problem with this ship, or – to be precise – with it's subcraft. According to TNE it sports a 10ton launch (a life boat by CT definition or customs) , CT assigns a 20ton launch so well, why not a 30 ton ships boat? Nah, just kidding, but at the time the rendering was done, only the Ships Boat model was in a representable condition.

I will likely model the basic liner and at least the Mercenary Cruiser variant (similar to the ship detailed in the MegaTraveller Supplement Assignment: Vigilante available via RPGNow).

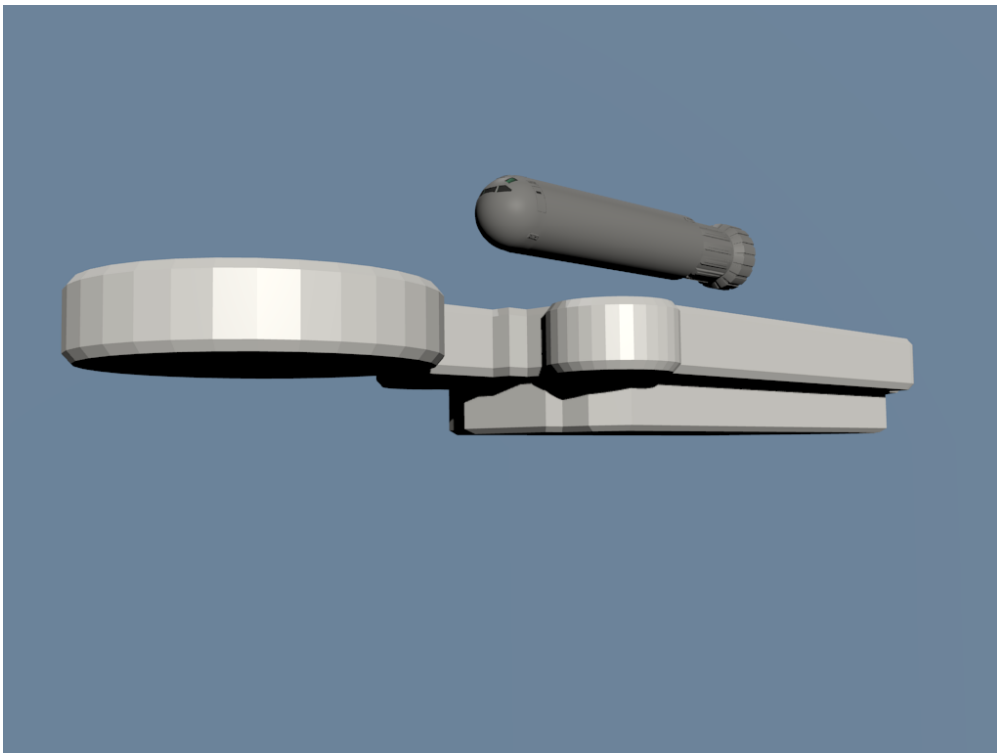
The image below shows a popular depiction of the Liner (well popular in my book). The subcraft Dock is normaly located beneath the main fuselage.



There are still a few models I am eager to make and the Liner is no exception. It is in the very early stages of blocking out the vessel, but a tiny preview is due today. See... but wait... that's a Ship's Boat and it's in a cradle on top of the hull. What the hell am I up to?



Below: an older image now superceded by the above.



And that's it for now. Cheers.