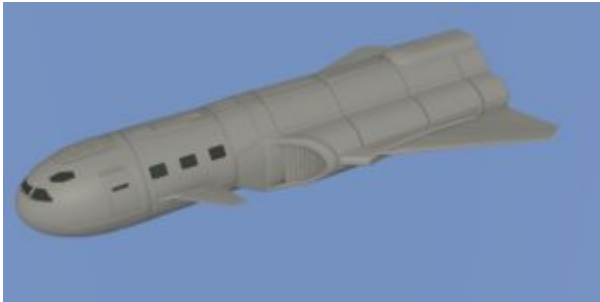


Small Craft – 40ton „Fast“ Pinnacle (CT/MT)

My take on the Classic Traveller „Fast“ Pinnacle



The Classic Traveller 40 ton Pinnacle – sometime called Fast Pinnacle – features a sweep wing configuration. While the original concept was somewhat different, I chose to use a well tested approach and opted for the wing configuration of an F-14 aircraft. The above image shows the Pinnacle in its standard or „B“ configuration, while the image below shows the default or „A“ configuration. The sweep-wing would have split the cargo bay horizontally if I’d left the wings the way they are depicted in CT deckplans (or in F-14 renderings) and chopped part of the rear inner wing to an angle. This way the swept wing fits inside the engineering compartment alongside both sides of the cargo bay.

The rear features a large extracting lower cargo ramp and a shorter top gate that allows 4dt containers to be loaded. Two will fit lengthwise. Additional cargo needs to be breakbulk. Rearviews and from below are in the works. Also I’m about to build different nose sections, but that’s of low priority.



Vol	Name	TL	Free	Gs	Fuel	Duration	MCr	Computer	Notes
40	Pinnacle	12+	24	5	2t	4 weeks	15.1	Model/2bis	L2

NOTES: B = Lift Body. C = Cramped Bridge. K = Cargo Lock. L0 = Short Term Life Support. L2 = Long Term Life Support. S = Spacious Bridge. +5 = Overtonnage by 5 tons. Vol. Volume, in tons.

Name. Official name for the small craft.

TL. Technological Level at which this ship is manufactured.

Free. Open, configurable space, in tons.

Gs. Acceleration, in gravities.

Fuel/Duration. Fuel tank size, and operational time given a full tank.

MCr. Price of small craft in millions of credits.

Computer. Computer model installed by default.

lnk = link to external reference / original design



40t Fast Pinnacle, using SmallCraftMaker

Descriptor	TL	Tons	Accel	Load	AV	Ca	Fl	Ra	So	Psi	In
Se MCr											

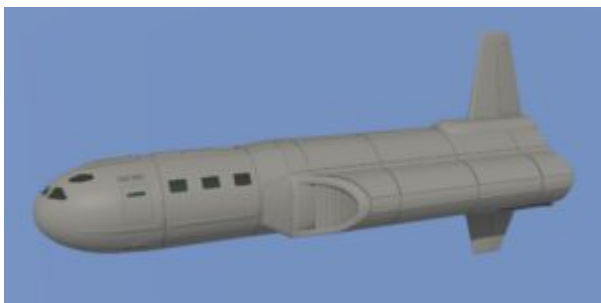
Pinnacle	14	40	4	22	30	10	10	10	10	0	10

10 9
 Fast +1 +1 -5
 +1
 M-Drive +5
 x2

 TL 15 40t 5G 22t free
 MCr 20

Small Craft – 40ton Slow Pinnacle (CT)

My take on the Classic Traveller Slow Pinnacle. Standard or „fast“ Pinnacle soon to follow.



Vol	Name	TL	Free	Gs	Fuel	Duration	MCr	Computer	Notes
40	Slow Pinnacle	9	30	2	0.5t	18 days	15.1	Model/1bis	C

NOTES: B = Lift Body. C = Cramped Bridge. K = Cargo Lock. L0 = Short Term Life Support. L2 = Long Term Life Support. S = Spacious Bridge. +5 = Overtonnage by 5 tons. Vol. Volume, in tons.

Name. Official name for the small craft.

TL. Technological Level at which this ship is manufactured.

TL 13 40t 2G 32t free
Mcr 16

GURPS Traveller Bundle of Holding

Grab it while you can. I just topped up my Traveller eBook library with the available Bundles of Holding and from what you get – at less than 50 bucks – it's very much worth the investment, I'd say (even though I already own GURPS Traveller 1E and Starports paperback editions).

GURPS Traveller Essentials Bundle of Holding contains:

STARTER COLLECTION

- GURPS Traveller 2E
- Starships
- First In
- Deck Plan 5: Sulieman-Class Scout/Courier

BONUS COLLECTION

- Behind the Claw
- Humaniti
- Starports
- Modular Cutter
- Deck Plan 2: Modular Cutter
- Deck Plan 1: Beowulf-Class Free Trader

GURPS Traveller Imperial Survey BoH contains:

STARTER COLLECTION

- Far Trader
- Alien Races 1
- Planetary Survey 3: Granicus
- Deck Plan 3: Empress Marava Far Trader

BONUS COLLECTION

- Alien Races 2
- Alien Races 3
- Alien Races 4
- Planetary Survey 1: Kamsii
- Planetary Survey 2: Denuli
- Planetary Survey 4: Glisten

How it works: The starter collections begin with attractive low prices, which can be topped off by paying more to get the bonus collection included. The price raises over time depending on previous payments. A quick decision pays off.